

# LED Light Source System

## IPL-L30 series Digital Color Viewer

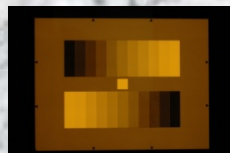
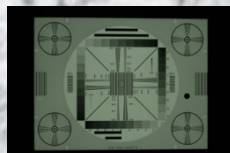
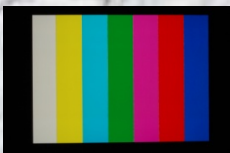


### Product Features

- White LED Light Support or RGB LED Light Support
- View Area : 160\*120mm
- Light Control button Function
- LCD Light Brightness Display
- Color Temp. : under2300k,3200k,5100k,  
over15000k (±5%)
- Brightness : Over 25,000Lux(Surface) or Customizing
- Uniformity : Over 90%
- RS232C PC Interface
- AVIS Light Controller Software (For RS232C)
- Input Power : DC24V/2.5A

## SPECIFICATION

MODEL	IPL-L30W	IPL-L30RGB
View Area	160*120mm	
Brightness	Over 25,000Lux(Surface)	Over 15,000Lux(Surface)
Color Temperature	under2300k~over15000k	R/G/B
Uniformity	Over 90%	
PC Interface	RS232C	
Display	128*64 Dot Graphic LCD	
Power supply	Input : AC100~250V 50/60Hz, Output : 24V/2.5A	
Power consumption (W)	Max. 35W(at Total on)	
Operating Temperature	-10°C ~ +50°C	
Dimension	179.5 *160 * 45 (WHD, mm)	



# LED Light Source System

## IPL-L30 series Digital Color Viewer



### • Introduction

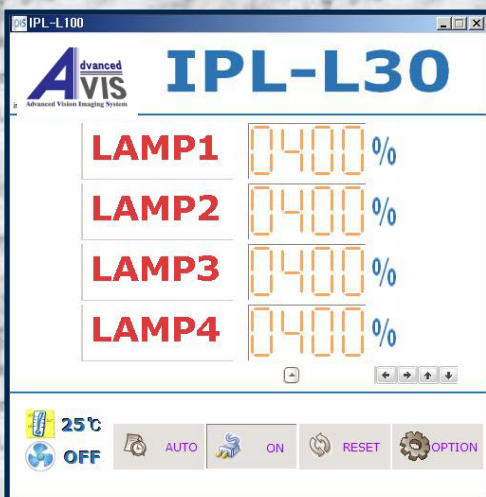
- ◇ With the standard illuminant which provides a fixing color temperature differently, it will be able to express a many kinds color temperature and color coordinates.
- ◇ No flicker because of using a digital constant current control method.
- ◇ Test the shading without the chart due to high uniformity of the standard illuminant.

### • Use field of product

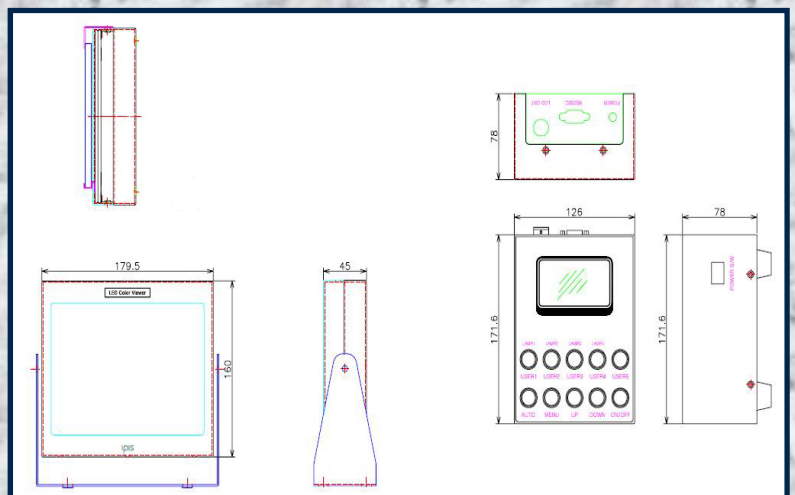
CCTV Analog Camera / USB PC Camera / Mobile Camera / Web Camera /  
Digital Camera / Lens Inspection etc.



### • PC Control program



### • Dimension



- It can be changed the specification without any notice for the quality improvement.

YOJET CO., LTD.  
Tel : 886-2-2729-2660  
Fax : 886-2-2729-2552  
<http://www.yojet.com.tw>  
[kevin@yojet.com.tw](mailto:kevin@yojet.com.tw)

